

### SPDT 8A 60VDC Solid State Relay

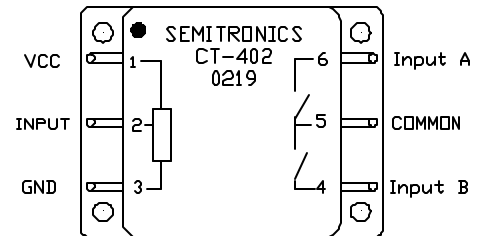
## Features

- CMOS Input Static Protected
- Break before make pole switching
- Optical isolation 500V min
- Fast switching speed, less than 1ms
- Hermetic power package.
- Low on resistance
- High current surge rating



**Table 1: Maximum Ratings**

Parameter	Limits		Units
	Min	Max	
120V per output		0.1	Sec
35 Amp starting surge time, tc		1.5	ms
Operating Temperature	-40	+90	°C
Storage Temperature	-40	+125	°C
Shock	Per Customer Specification		
Vibration	Per Customer Specification		
Ambient Pressure	180	1200	mB



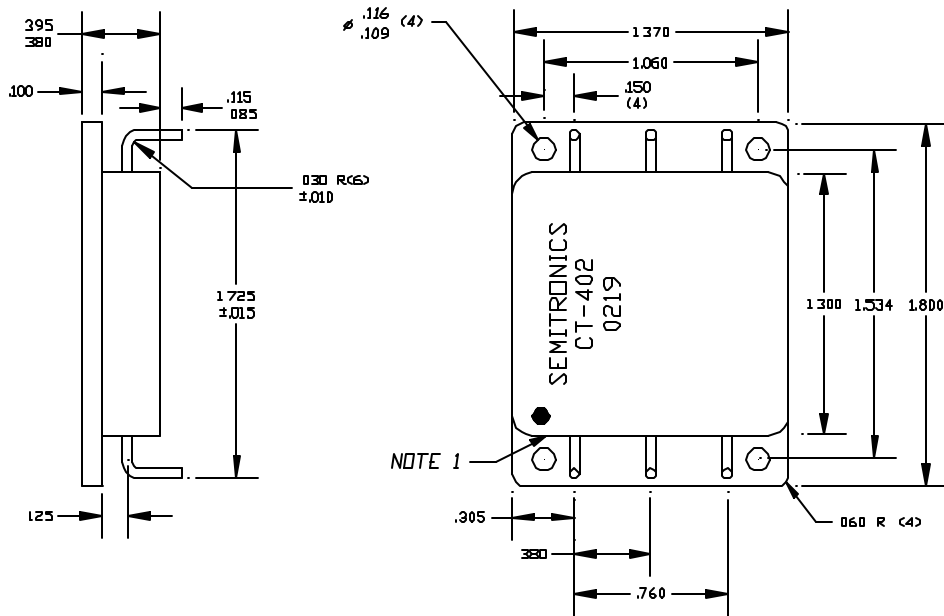
**Table 2: Electrical Characteristics @ 25°C**

Parameter	Symbol	Limits		Units
		Min	Max	
On Resistance @ 90°C	Ron		0.10	ohms
Leakage Current	Ioff		10.0	ua
Control Current	Icc		30	ma
Input Voltage High	V <sub>IH</sub>	11.0		Volts
Input Voltage Low	V <sub>IL</sub>		4.0	volts
Input Current	I <sub>in</sub>		10.0	ua
Turn on Time	T <sub>on</sub>		1.0	ms
Turn off Time	T <sub>off</sub>		0.5	ms
Insulation Resistance	R <sub>ins</sub>	1000		Mohms

**Table 3: Functional Characteristics**

Control Supply (V)	Control Input	A	B
0	V <sub>IL</sub>	OFF	OFF
0	V <sub>IH</sub>	OFF	OFF
15	V <sub>IL</sub>	ON	OFF
15	V <sub>IH</sub>	OFF	ON

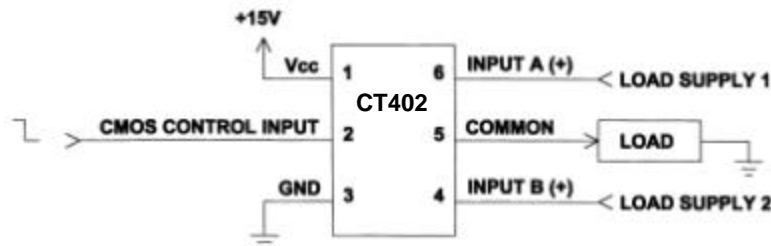
### Mechanical Dimensions



#### Notes:

1. Pin 1 shall be identified by a mark or symbol on the cover next to the seal.
2. Maximum Frame/Base mismatch +.002/-0.006
3. Lead Diameter .050 ± .005
4. Base Material: Glid Cop
5. Top of the pins with respect to the bottom of the base plate are .465 to .510 inches
6. With respect to the 1.380 package edge, the center of the mounting hole, to the centerline of the adjacent lead is .115 ± .015.  
With respect to the 1.800 package edge, the center of the mounting hole, to the centerline of the adjacent lead is .037 ± .015.

### Typical Applications



Switching DC Power from Two Sources to a Load

### Ordering Information:

#### CT402M

Testing and Screening for Military Applications. MIL-PRF-38534, Table X Screening and Electrical Testing over full temperature range

#### CT402

Semitronics Standard Testing and Screening and Testing for Industrial Applications.