

SPDT 8A 60V Solid State Relay

Features

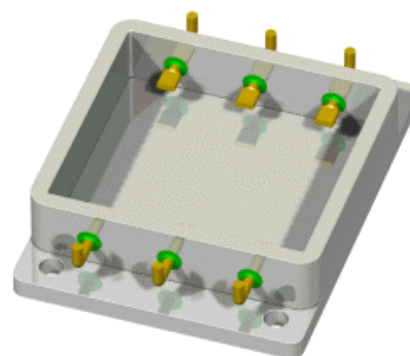
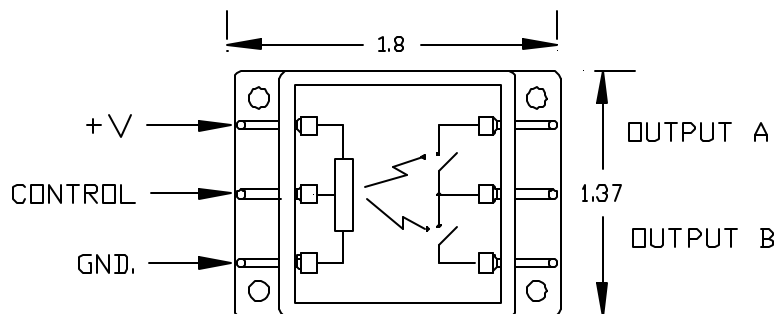
Break before make pole switching
Optical isolation 500V min
Fast switching speed, less than 1ms
Hermetic power package.
Low on resistance
High current surge rating

Maximum ratings

120V per out[put] 0.1 sec max
35 Amp starting surge, $t_c = 1.5\text{ms}$
Operating temperature -40C to $+90\text{C}$
Storage temperature -40C to $+125\text{C}$
Shock TBD
Vibration TBD
Ambient Air Pressure 1.2 Bar to 180mB

Specifications

On Resistance 0.08 ohms max, $I_o = 8\text{A}$, $T_c = 90\text{C}$
Leakage current 10ua max at 70V, each output
Switching speed pole A to pole B 1ms max (including delay)
Control input = 0 to 10V output "A on"
Control input = 12 to 20V output "B on"
Control supply = 10V (TBD)
Control supply current 75 ma max. (TBD)



Base thickness 0.100"
Overall height 0.395"

Preliminary